

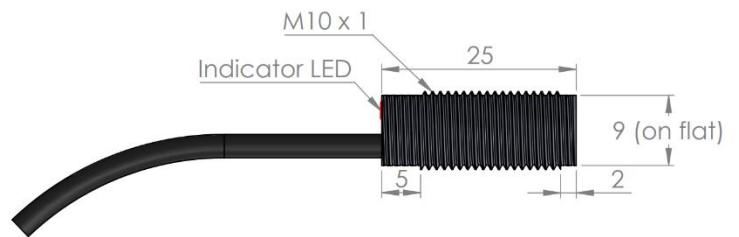
RS-M10WS-L25

Speed Sensor

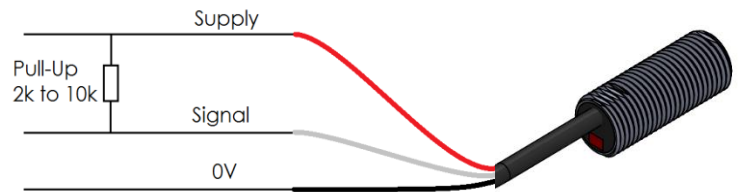


Measurement features		
Max Frequency	20	kHz
Distance to target	1 to 2.5mm	mm
Sensitive Element	Differential Hall Effect Sensor	
Electrical features		
Supply Voltage	4 to 25V	V
Supply Current	15	mA
Output signal	NPN open collector	
Output resistance	Needs a Pull Up resistor	
Max Voltage on the output	25	V
LED indicator	Yes	
Orientation	Side flats in the Sense of rotation (see drawing)	
Mechanical features		
Thread	M10 x 1.00	
Length	25	mm
Material	Stainless steel	
Weight (without cable)	15	g
Recommended tightening torque	3	N.m
Max tightening torque	5	N.m
Environment		
Protection	IP66	
Vibration test	20 Gpp 5'	
Shock	500	G
Operating Temp	-50 to +180	°C
Storage Temp	-50 to +150	°C

Texense sensors are designed for data logging. Should the users want to include this sensor in a closed loop system, they must undertake total responsibility from doing so.

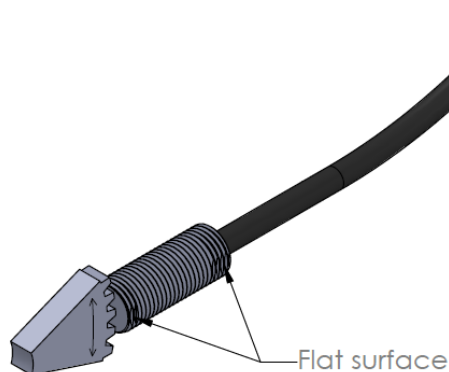


Wiring

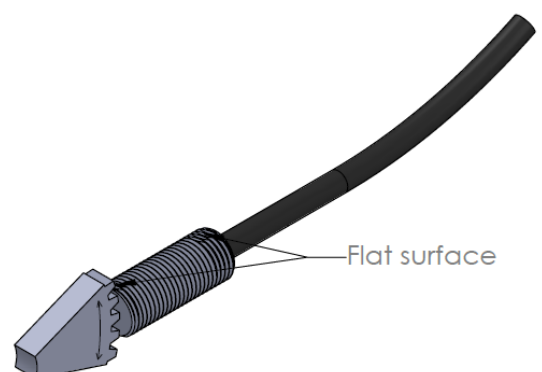


If the data logger has no pull-up, it must be added between supply (red) and signal (white) wires.

Orientation



Orientation OK



Wrong orientation